



1

Installing The Bluetooth Software

IMPORTANT: You must install the Bluetooth Software from the CD included with the Adapter before connecting the Adapter to your PC.

Before connecting the Adapter to your PC's USB port, you must install the Bluetooth Software, which will install everything your system needs to use the Adapter. Once this Setup Wizard is installed, you will be able to connect the Adapter to your PC.

A Insert the Adapter's Setup Wizard CD into your PC's CD-ROM. It should start up automatically. If it does not, click **Start** and choose **Run**. In the field that appears, enter **D:\setup.exe** (if "D" is the letter of your CD-ROM drive). Once the CD starts, the Wizard's Welcome screen should appear.

Click the **Install** button to install the Bluetooth Software. Clicking the **User Guide** button will open up the User Guide's pdf file.

B After clicking the **Install** button, the InstallShield Wizard's Welcome screen will appear. Click the **Next** button to continue.



A



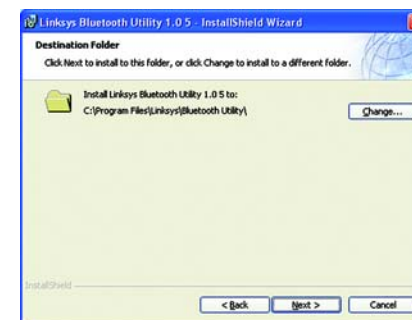
B

C The next screen is the *License Agreement* screen. Read the License Agreement and click the radio button for **I accept the terms in the license agreement**. Then, click the **Next** button. You may not click the Next button unless you click the button showing that you accept the terms.

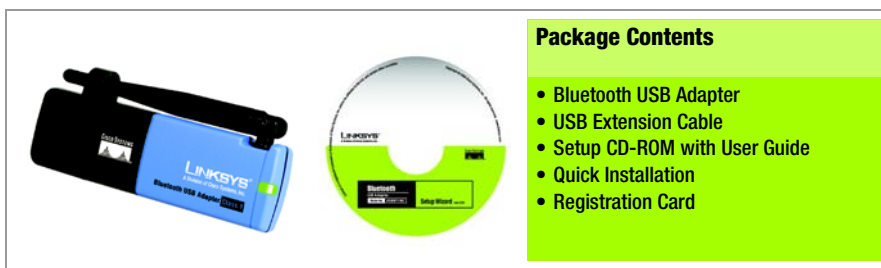


C

D You will next be asked for a Destination folder. This is where the Bluetooth Software will be installed. A default directory will be displayed but, if you wish to change that, you can click the **Change** button and select a different folder. Then, click the **Next** button.



D



Bluetooth USB Adapter

Quick Installation

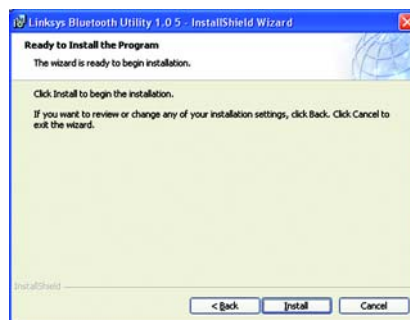
Wireless



E

Now, the Bluetooth Software will be ready to begin installing all of the necessary files. Click the **Install** button to begin.

The files will then install.



E



F

F

During installation, you may see a Driver Signature Notice. This product has been tested for use with Windows. Click the **OK** button to continue.

G

At this point, you should connect the Adapter to your PC's USB port. (See the description in the next step for details.) After connecting it, click the **OK** button.



G



H

H

The Wizard, along with all you need to install the Adapter, has been successfully installed. Click the **Finish** button to close the final window.

NOTE: Restart your PC if requested by Windows.

2

Connecting the Adapter

A

After a moment, a Bluetooth icon will appear in your system tray.

B

To connect the Adapter to your PC, simply plug it into any unused USB port.

Congratulations! The installation of the Adapter is complete.



B

LINKSYS®
A Division of Cisco Systems, Inc.

For additional information or troubleshooting help, refer to the User Guide on the Setup CD-ROM. You can also call or email for further support.

24-hour Technical Support
800-326-7114
(toll-free from US or Canada)

E-mail Support
support@linksys.com

Website
<http://www.linksys.com> or
<http://support.linksys.com>

RMA (Return Merchandise Authorization)
<http://www.linksys.com/support>

FTP Site
<ftp://ftp.linksys.com>

Sales Information
800-546-5797 (800-LINKSYS)

NOTE: Before you can start using the Adapter, you must run the Bluetooth Setup Wizard by right-clicking the Bluetooth icon and selecting the Wizard, as described in Chapter 3 of the User Guide.

Linksys is a registered trademark or trademark of Cisco Systems, Inc. and/or its affiliates in the U.S. and certain other countries. Copyright © 2005 Cisco Systems, Inc. All rights reserved.

USBBT100-QI-50227 KL